

CTC EcoZenith i550 Pro

Heat pump

- Heat pump 1
- Heat pump 2
- Heat pump 3

Heating circuit

- Heating circuit 2
- Heating circuit 3

DHW

- DHW circulation
- DHW tank extern
- Water heater

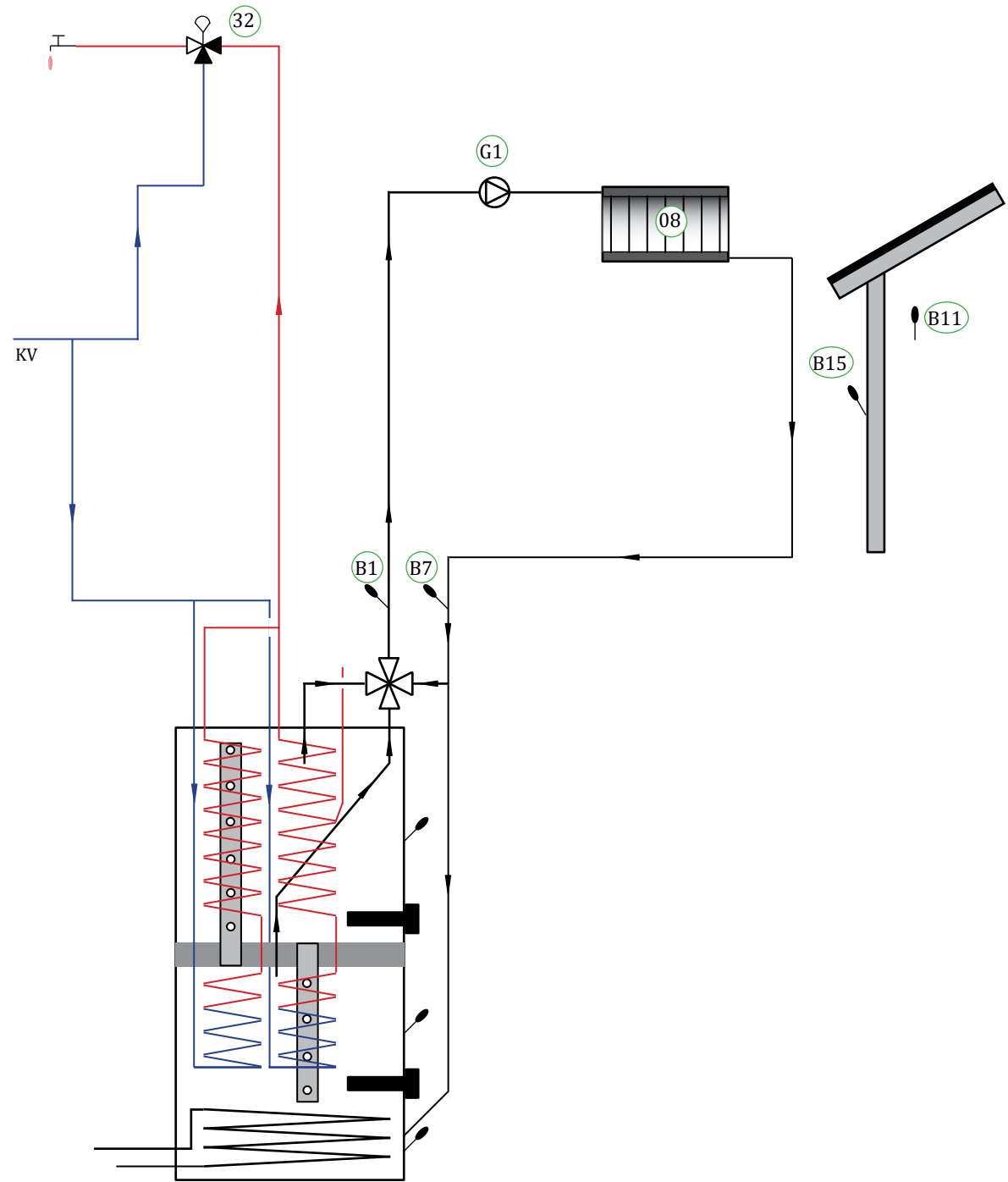
Solar panels

- Solar panels
- Heat exchanger
- Borehole rechr

object:

Other

- Pool
- Additional Heat
- Wood
- Buffer
- Differential thermostat
- Cooling
- Electric heater 3



Parts list

01.	CTC EcoZenith i550 Pro upper tank
02.	CTC EcoZenith i550 Pro lower tank
03.	Wood Boiler
04.	External boiler (pellets, oil, gas, electricity, other)
05.	Plate heat exchanger – solar heat
06.	Storage tank 1
07.	Storage tank 2
08.	Radiator system 1
09.	Radiator system 2
10.	Radiator system 3
11.	Finned coil – solar heat
12.	Charge equipment - external storage tank
13.	External DHW tank
14.	Plate heat exchanger - pool
15.	Pool
16.	Fluid/water heat pump (CTC EcoPart)
17.	Solar collector (flat panel or vacuum tube)
18.	Plate heat exchanger – recharging bore hole
19.	Charge equipment, such as Laddomat 21
20.	Non-return valve, DHW system
21.	Electric shut-off valve, radiator system 1
22.	Non-return valve, DHW system
23.	Non-return valve, DHW system
24.	Non-return valve, solar heat
25.	Non-return valve, heat pump 1
26.	Non-return valve, heat pump 2
27.	Non-return valve, heat pump 3
28.	Control valve, DHW system
29.	Control valve, DHW system
30.	Control valve, DHW system
31.	Diverting valve - manual, external DHW tank
32.	Mixing valve, DHW system

34.	Non-return valve, DHW system
35.	Non-return valve, DHW system
36.	Non-return valve, brine system
37.	Heat exchanger passive cooling (CTC EcoComfort)
38.	Non-return valve passive cooling
39.	Pipe for floor cooling/fan convector
40.	Fan convector
41.	Non-return valve, low pressure drop (only for passive cooling)
HP A1	Heat pump 1
HP A2	Heat pump 2
HP A3	Heat pump 3
E1/E4	Immersion heater - lower tank
EL 1-3	Immersion heater - upper tank 1
E5.	Immersion heater - upper tank 2
B1.	Sensor, primary flow to radiator system 1
B2.	Sensor, primary flow to radiator system 2
B3.	Sensor, primary flow to radiator system 3 Option: Sensor, primary flow CTC EcoComfort (Cooling)
B5.	Sensor, tank upper
B6.	Sensor, lower tank
B7.	Sensor, radiator return
B8.	Sensor, flue gas wood boiler
B9.	Sensor, wood boiler
B11.	Room sensor 1
B12.	Room sensor 2
B13.	Room sensor 3 Option: Room sensor, CTC EcoComfort (passive cooling)
B15.	Sensor, outside
B17.	Sensor, external boiler
B30.	Sensor, solar collector return
B31.	Givare, framledning solfångare
B32.	Givare, laddning solvärme

B33.	Sensor, solar coil
B41.	Sensor, external storage tank upper
B42.	Sensor, external storage tank lower
B43.	Sensor, external DHW tank
B50.	Sensor, pool
G1.	Circulation pump, radiator system 1
G2.	Circulation pump, radiator system 2
G3.	Circulation pump, radiator system 3 Option: Circulation pump, CTC EcoComfort
G6.	Circulation pump, flue gas controlled
G11.	Circulation pump, heat pump A1
G12.	Circulation pump, heat pump A2
G13.	Circulation pump, heat pump A3
G14.	Circulation pump integrated in the accessory CTC EcoComfort (passive cooling)
G30.	Circulation pump, solar panel
G31.	Circulation pump, recharging bore hole
G32.	Circulation pump, plate heat exchanger – solar heat
G40.	Circulation pump, DHW circulation
G41.	Circulation pump, external DHW tank
G43.	Circulation pump, external storage tank charging
G44.	Circulation pump, external boiler
G45.	Circulation pump, external storage tank discharging
G50/51	Circulation pump, pool and pool charging
Y1.	Mixing valve, radiator system 1
Y2.	Mixing valve, radiator system 2
Y3.	Mixing valve, radiator system 3
Y21.	Diverting valve, heat pump - in
Y22.	Diverting valve, heat pump - out
Y31.	Diverting valve, recharging bore hole
Y40.	Diverting, charging/discharging storage

