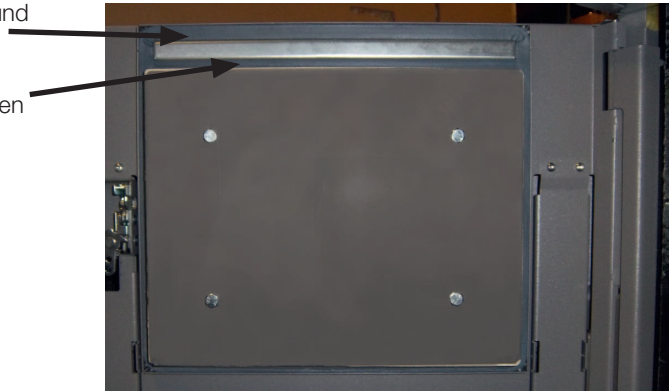


Exterior sealing strip (length = 1440 mm). Seals around the entire door.

Interior sealing strip (length = 375 mm). Seals between the fuel chamber and by-pass duct.

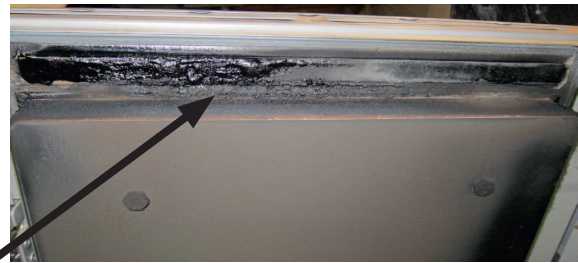


When should the sealing strip be replaced?

The sealing strips normally last for several years, but must be replaced when necessary.

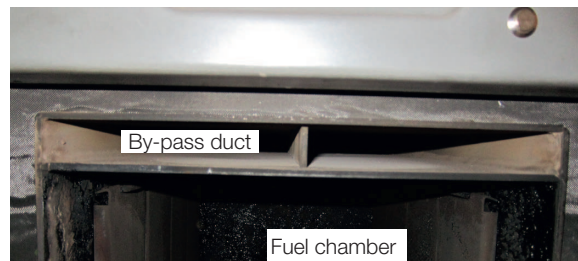
The sealing strips, especially the interior strip, may wear out more quickly if the fill door is not adjusted correctly, leading to flue gas leaking out between the fuel chamber and the by-pass duct. Spare parts kit includes extra interior sealing strips.

The example here shows what the interior sealing strip might look like when it needs to be replaced. In this example the exterior sealing strip does not need to be replaced.

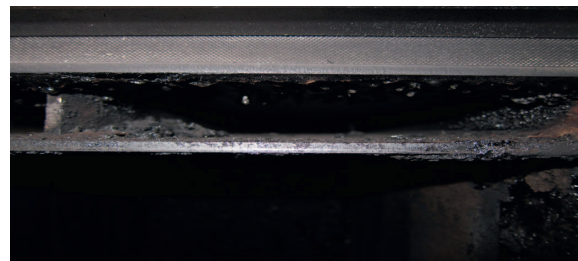


By-pass duct

The image shows an example of what the by-pass duct looks like when the interior sealing strip is intact. The duct should be clean as shown in the image.



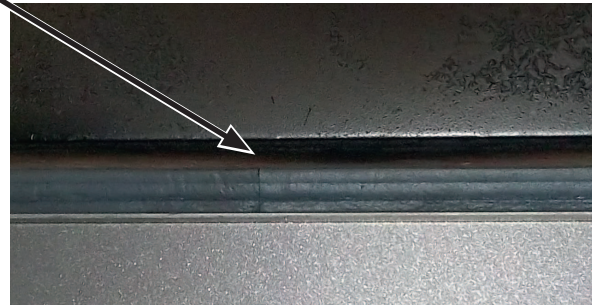
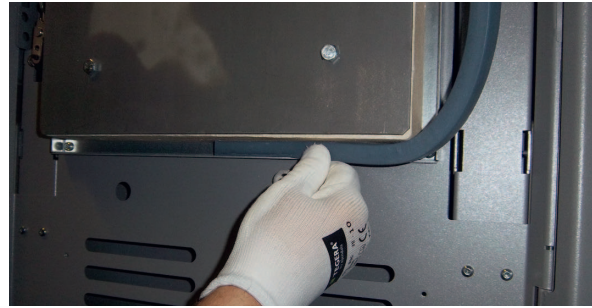
The image shows an example of what the by-pass duct might look like when the interior sealing strip is leaking, or when firing has taken place with the fill door open.



- ! NB: Doors must always be closed when firing!**
- Firing with the doors open (Fill door/Ash door) is strictly prohibited.
- This can seriously damage the boiler and cause flue gases to leak out.

Installing sealing strips

1. Remove the old strips and clean the groove.
2. Fit the exterior sealing strip first. Ensure that the joints are placed as shown in the image, on the underside of the insulation. The exterior sealing strip is cut to the correct length. Ensure that the joints are tight.



3. Make sure that the strip goes right into the corners.



Correct

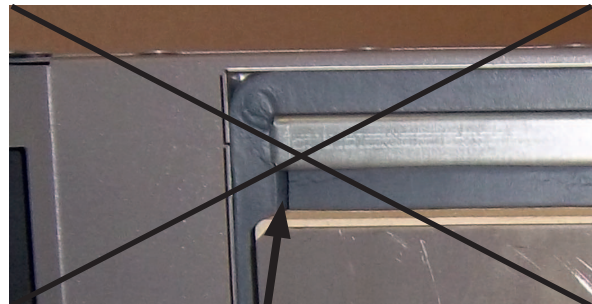


Incorrect

4. Fit the interior sealing strip. The strip is cut to the correct length. The strip must be pressed together slightly when fitting to tighten the seal against the exterior sealing strip.



Correct

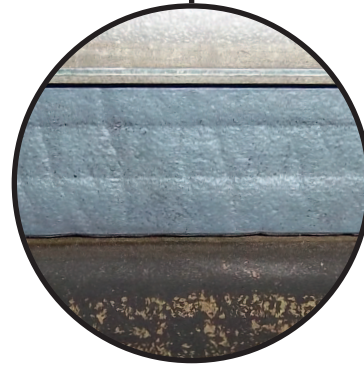
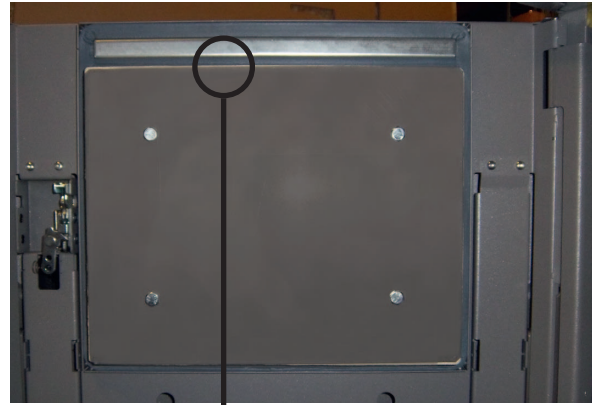


Incorrect

Adjusting the fill door

Check that the fill door seals against the boiler body when it is closed.

- Leave the door closed for a while, then open it and check that the boiler body has left clear dents in the middle of the sealing strips all the way around the door; see image.
- Close the door and press the start button so that the fan starts; if the sealing strip is leaking, a whistling sound will be heard around the door meaning the door needs to be adjusted.



If the door is not tight, it must be adjusted.

This is done by moving the hinge and the lock. Move the hinge/lock in towards the boiler casing in order to increase the pressure on the sealing strip.

Tip: Before loosening the screws, mark their current position on the hinge and lock with a marker pen; see image.



Carry out the adjustment on the lock side as well.

Carefully loosen the screws until the hinge can be moved inwards or outwards.

Adjust and tighten; check that the door is tight.



Affix the “Check before every firing” sticker.



! If the charge pump G11 is used with a flow-through heater, the control signal must be provided by the CTC EcoLogic.